



HERITAGE

9 History is reimagined in sustainable, boutique apartments

Druids Hall apartment conversion Torrensville

Why we love it: The superb transformation of 1910-built Druids Hall into five-star boutique apartments on a tight allotment is a showcase of how heritage can be reimagined and repurposed for modern life - and sustainability.

Located in inner urban Torrensville, the former RSL hall facade was tastefully restored, while two-storey contemporary apartments in a sleek, monochrome palette, were added, bringing luxury mid-density housing to a lively inner area. The use of exposed brick adds authenticity and a beautiful link back to the facade. The project won BILT the 2021 HIA South Australian Apartment Complex award.



1

HAVE YOUR SAY
ON THE TOP 50
VISIT TOP50HOMES.COM.AU



HISTORIC

8 Full of character and a short walk to the shops. Fit for a governor

Hello, Governor! Government House North Tce, Adelaide

Why we love it: We've included this place on a technicality, because while most people don't get the chance to live here, someone does (currently Governor Frances Adamson, pictured).

So for that reason, being set in a prime location on North Tce opposite Parliament House, we had to include it on our list. With plenty of bedrooms, character features throughout, sprawling landscaped gardens and even



a statue of the late Queen Elizabeth II, what's not to like? Plus, it's walking distance to the shops. We reckon if we lived here we'd be one of those families that takes the trolley all the way home ...



CLASSIC CHARACTER

7 Character meets contemporary living in a quality update

Whistler Ave Unley Park

Why we love it: This one has stood out to our team as one of the more memorable sales in recent years. Not just for its price tag - this home set a new suburb record when it sold last year for \$6.425m - but simply because of the high calibre of

the home and the quality of its impeccable update and contemporary extension.

This renovated 1915 Queen Anne Villa at 21 Whistler Ave sits on a 3845sq m allotment and has a tennis court, pool, numerous outdoor areas to entertain and an impressive facade. It's just what you would expect in this suburb.



CHURCH CONVERSION

6 Family with faith and wisdom restore an 1870s church

Heavenly Place Willunga

Why we love it: This Willunga church conversion is nothing short of heavenly. A dream project for its owners Sarah and Adam Hall, the 1870s church has undergone a complete makeover. Instead of being one large hall, it now boasts multiple living spaces, including a mezzanine floor.

The conversion has retained the old world charm of the heritage building while infusing a light, contemporary feel. You know it's the perfect family home



when there's a swing in the lounge! This is heaven.
Pictures: Marnie Hawson. Styling by Read & Hall



Step ahead of the rest

Mitcham Abode Mitcham

Why we love it: Architects tend to be passionate people and put love into their work.

This one is the architect's family home, Glasshouse Projects' director Don Iannicelli, and it comprises all the things they thrive on: a complex build, a challenging, steep site with a 30m drop and views of the city

skyline. The three-storey build has a cantilevered "black box", the floating staircase is a masterpiece and the contemporary mid-century detail is sublime. Innovative, with a beautiful use of natural materials, this represents how working with the lay of the land, simply works. This won the 2022 Master Builders Contract Home of the Year \$1m-2m award (SA).
Pictures: Aaron Citti / Long Shot Images



COASTAL LUXURY

2 Scandinavian-inspired residence in a remote sanctuary

The Dunes Nalyappa

Why we love it: A private, 2km-long beach, custom-built helipad, dune buggy racetrack and an aquaponics geo-dome, The Dunes on Yorke Peninsula truly has it all.

Sold for an eye-watering \$8.25 earlier this year, it set a new benchmark for residential sales price in regional SA.

Formerly owned by entrepreneur Peter Michell and designed by architect Max



Pritchard in Scandinavian style, it has six bedrooms, 5.5 bathrooms and two lounge rooms with double-glazed windows offering uninterrupted, breathtaking views of the landscape.



DISNEY LUXURY

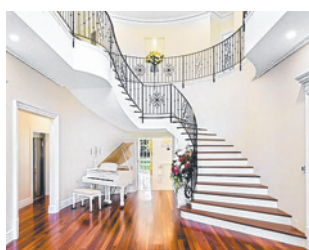
5 Manor resembles a film set with rooms for music, art and fun

Yahtalia Manor Yatala Vale

Why we love it: It's a stately, picture-perfect mansion that looks straight out of a Disney movie set.

This magnificent property in Yatala Vale, worth an estimated \$12m, is nestled in its own botanic setting with immaculate gardens and a duck pond with a fountain.

Inspired by French Provincial architecture, the owners spent years transforming what was once a council dumping ground and a pottery factory into a stunning manor.



Boasting 2271sq m of living space, there are multiple formal as well as casual living and dining rooms, including a wood-panelled library, a home cinema with stadium seating, music studio, arts and crafts room, billiards room, gym and a games room with a bar.



MEGA MANSION

4 Palatial residence has all the hallmarks of grandeur

Hotel-like grandeur Shahin's Burnside property Burnside

Why we love it: We don't really know too much to tell you about this home. The Shahin-owned property sitting proudly on Burnalta Cres is

arguably the grandest home ever built in SA.

Not much is known about the home's internal offerings, but if they're in line with the French-styled exterior (and why wouldn't they be?) then we can imagine the inside of this place is out of this world.



CHARACTER

3 Rich in history, renovated for a privileged lifestyle

Boulevard of dreams Robe Tce, Medindie

Why we love it: Its selling agents captured this home's essence best when they brought it to the market earlier this year: "We are privileged to be offering this masterclass of luxury and lifestyle that is nestled among some of South Australia's most exclusive private estates, on prestigious Robe Terrace in Medindie.

"This Grand Residence is rich in prosperity and history, has been exquisitely renovated, extended and enhanced to now become one



of South Australia's finest lifestyle estates.

"Offering luxury buyers the ultimate in family living and entertaining in this illuminous iconic location." Yeah, that's why we like it too ...