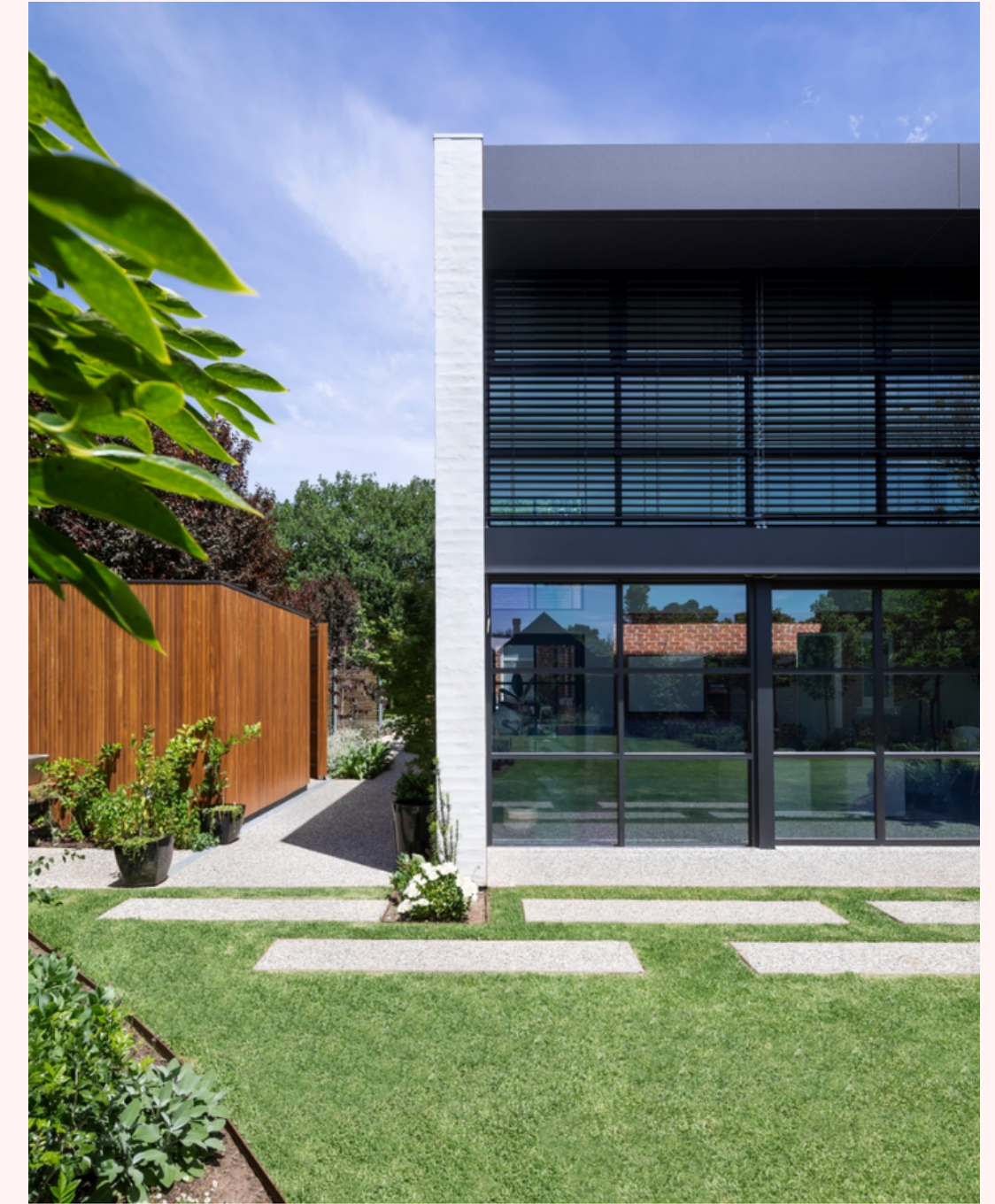




PROJECT FEATURE • ARCHITECTURE & INTERIOR DESIGN FEATURES

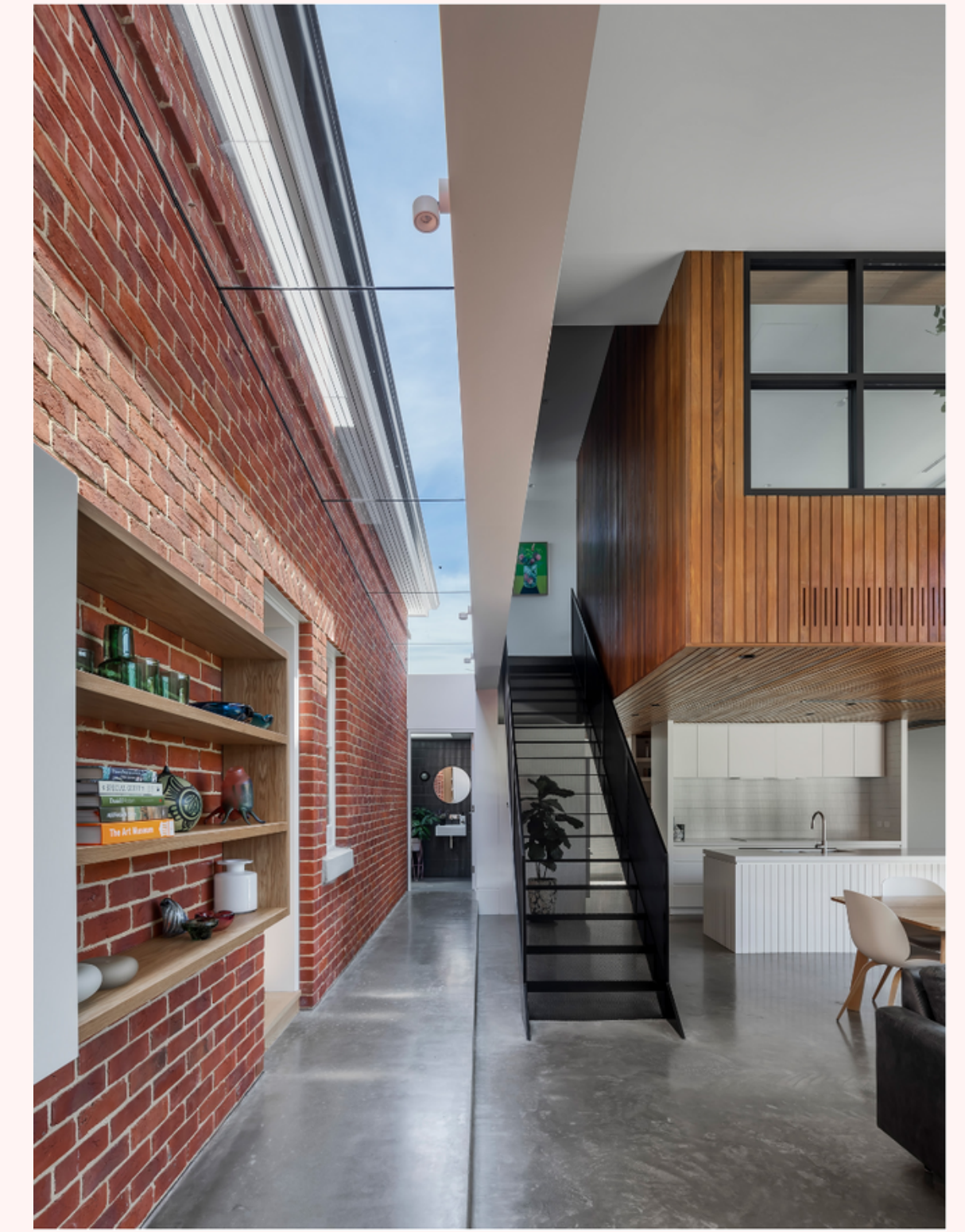
Connected Openness – Doyle House by Glasshouse Projects

Words by Bronwyn Marshall • Architecture by Glasshouse Projects • Photography by Aaron Citti Photography • Build by Glasshouse Projects • Interior Design by Glasshouse Projects •
Landscape Design by Tim K Gardens • Joinery by Gawler Custom Specialist Joinery • Engineering by MQZ Consulting Engineers



Extending from the established villa, Doyle House uses the existing scale to inform the volumetric response to the rear. Glasshouse Projects preserves the original character and charm of the home, consciously restoring and proposing an addition to increase openness and connection.

Settled within the outer extents of Adelaide's CBD, Doyle House sits in Rose Park among a collective of similar era heritage homes. In keeping with the historic fabric of the streetscape, the addition is modestly concealed behind the façade and only discovered once within the site. In opening the rear and creating an addition that combines the living areas, a more considered sense of flow is injected into the home. Glasshouse Projects restores elements of the original villa whilst overlaying a cohesive modern enrichment through a shared materiality palette.



Glasshouse Projects restores elements of the original villa whilst overlaying a cohesive modern enrichment through a shared materiality palette.

Sited on a generous allotment, Doyle House is built upon the key relationship between the structural elements on site and the surrounding landscape. In drawing occupants together and allowing an ease of flow out into the garden, the addition brings a modern useability to the home. The addition sits as a linear-inspired series of volumes that extrude out from the original, bringing a sense of rigor to the form and framing views out.

Bringing natural light into both the new addition and the existing form was a key focus of the renovation. The large openings and integrated glazing allow visual access and increased ventilation, with a large cantilever creating a covered outdoor dining space below. In expressing the transition between old and new, the original brick wall remains as an internal feature between the two forms – a reminder of the home's rich history.



Sited on a generous allotment, Doyle House is built upon the key relationship between the structural elements on site and the surrounding landscape.



With considered references to original detailing, Doyle House is reinterpreted through a contemporary architectural vernacular. Glasshouse Projects proposes a bold addition to the home that expresses a current relevance, rejuvenating the residence for the future.

